

# NBA FASTBREAK

## Amendment

The following corrections/changes have been made to the NBA Fastbreak Operations Manual. Please keep this amendment with your manual.

### Page 2-4 Backbox Insert Assembly

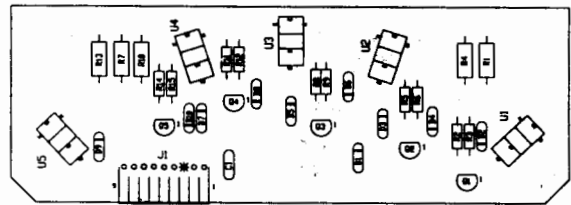
Item #8 was corrected to 31-2814-8 Backbox Plastic-NBA,  
Item # 15 has been changed to 23-6519-4 Flipper Ring, 1-1/2" Red,  
Item #18 has been changed to 31-2817.1 Overlay.

### Page 2-14 A-21402 Defender Switch Board Assembly

Added PCB to Parts Section.

Part Number	Designator	Description
5043-08996-00	C1	Capacitor, 0.1M, 50v ( $\pm 20\%$ )
5070-09054-00	D1-D10	Diode 1N4004. 1.0A.
5791-12622-09	J1	Connector, 9-pin Header
5160-10269-00	Q1-Q5	Trans. 2N3904 NPN
5010-09061-00	R1, R4, R7, R10, R13	Resistor, 680 $\Omega$ , 1/2w, 5%
5010-09358-00	R2, R5, R8, R11, R14	Resistor, 1K $\Omega$ , 1/4w, 5%
5010-08998-00	R3, R6, R9, R12, R15	Resistor, 2.2K, 1/4w, 5%
5490-14575-00	U1-U5	IC Opto Inter w/Schmit 10mA

A-21402 Defender Sw. Board Assembly



### Page 2-18 Flipper Assembly

Item #12 has been changed to FL-11753 Flipper Coil (Yellow).  
Added item #17, 03-7066-5 Coil Tube.

### Page 2-24 Pass Assembly-No.1

Item #2 has been changed to 01-14592.1 Pass Switch Mtg. Bracket.  
Added item #7 to pictorial.

### Page 2-25 Pass Assembly-No.2 & No.3

Item #2 has been changed to 01-14592.1 Pass Switch Mtg. Bracket.

### Page 2-26 Pass Assembly-No.4

Item #2 has been changed to 01-14592.1 Pass Switch Mtg. Bracket.

### Page 2-27 Auto-Fire Assembly

Item #1 has been changed to 01-14618 Bracket Assembly,  
Item #2 has been changed to A-6306-2 Plunger Assembly,  
Item #3 has been changed to 03-7067 Coil Tubing,  
Item #5 has been changed to AE-24-900 Coil Sub-Assembly.

### Page 2-28 Defender Arm Assembly

Item #11 has been changed to 4010-01082-04 SS 10-32 x 1/4".

### Page 2-30 NBA Magnet Assembly

Revised pictorial; added callout #6.

### Page 2-31 Loop Diverter Assembly & Hook Diverter Assembly

Replaced item #6 with H-19523 Mini Solenoid Cable,  
Deleted item #9.

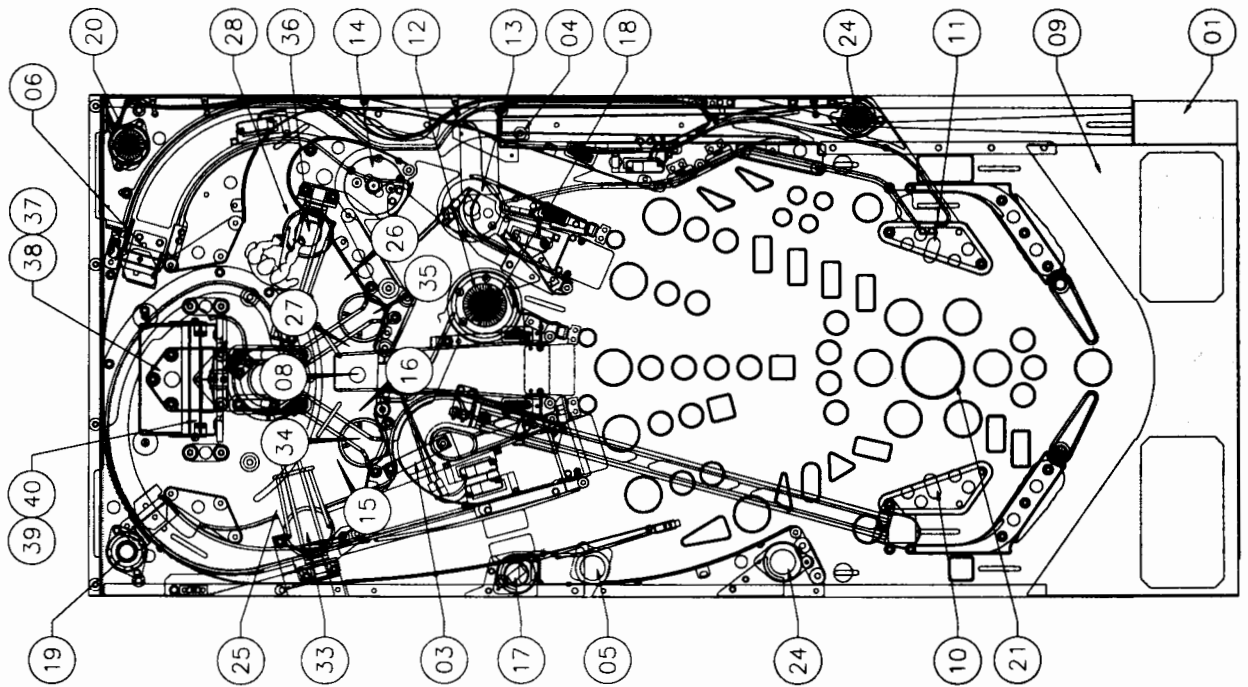
### Page 2-41 Solenoid/Flashlamp Locations

Revised pictorial, see next page.

### Page 2-45 Lamp Locations

Revised pictorial, see next page.

# **Solenoid/Flashlamp Locations** (Page 2-41)



# **Lamp Locations** (Page 2-45)

