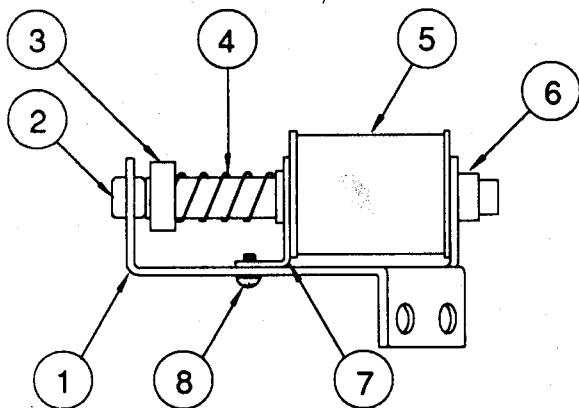


The ADDAMS FAMILY

Manual Amendment

The coil on Eject Assembly (A-15368) in the The Addams Family Operations Manual has been changed to AE-28-1500. Please make the necessary corrections to the pages listed below.

<u>Page Number</u>	<u>Item Number</u>
2-22	5
2-41	26
3-6	26
Inside Front Cover	26



A-15368 Eject Assembly

Item	Part Number	Description
1.	01-10652	Bracket Assembly
2.	23-6420	Rubber Grommet
3.	A-15371	Plunger Assembly
4.	10-135	Solenoid Spring
5.	AE-28-1500	Coil Assembly
6.	03-7067-5	Coil Tubing
7.	01-8-508-T	Solenoid Bracket
8.	4008-01017-04	Mach. Screw, #8-32 x 1/4"

Correction

Page 1-44 of the operations manual, the Pinball Missing error message should read...

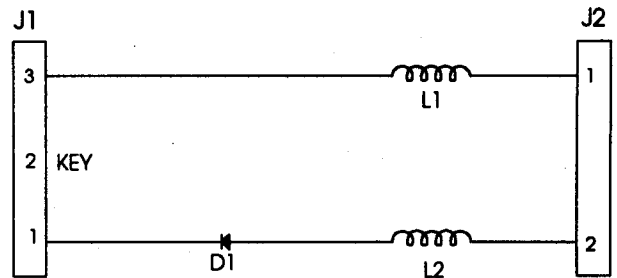
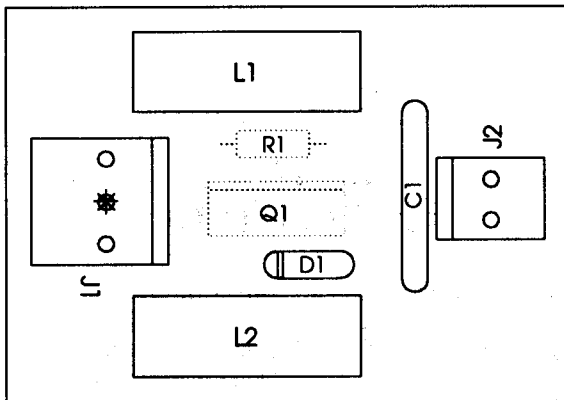
THE ADDAMS FAMILY normally uses three balls; however, it will operate with one ball.

The ADDAMS FAMILY

AMENDMENT

The Motor EMI Board, part number A-15340, has been changed to A-15542. Below is the updated drawing of the board, schematic, and parts list. Please make the necessary corrections on pages 2-13, 2-33, 2-38 and 3-13, of The Addams Family operations manual.

A-15542 Motor EMI Board & Schematic



Part Number	Designator	Description
*	-	Bare PC Board
5551-09822-00	L1, L2	Ind. 4.7MH3AMP
5791-12273-03	J1	Connector, 3-pin Header Sq.
5791-12273-02	J2	Connector, 2-pin Header Sq.
†	R1	Resistor, 2.2KΩ, 1/4w, 5%
5070-09054-00	D1	Diode 1N4004, 1.0A.
†	Q1	Transistor TIP 102

Notes: * Not available for individual sale.
† Not Used.